

■ BM-21 | INDUSTRIAL PLATE & PIPE BEVELLER

This new generation portable beveling machine BM-21 is one of the best tools for machining plates and pipes prior to welding.

It is a beveller developed on the basis of many years of experience with highly successful predecessor model BM-20, which for many years was on the most favored tool list for many customers worldwide.



■ Most important features include:

- new single milling head equipped with 10 square inserts, that makes machining process far more efficient with little operator's effort
- fast and easy exchange of inserts with no need for special adjustment
- extended working range from 0 to 60 degrees with continuous angle adjustment
- easy setting of bevel angle and bevel width
- vibration insulation protects both the operator and electronics against vibration
- one universal guide plate for beveling both plates and pipes

Special model BM-21S with lower speed motor dedicated for machining **STAINLESS STEELS** is now available



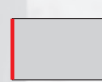
Max. bevel width
21 mm



Bevel angles
0-60°



Top beveling



Facing off



Pipe beveling
OD 150-300 mm
OD 260-600 mm (option)

BM-21 TECHNICAL SPECIFICATION

Voltage	1~ 220-240 V, 50-60 Hz 1~ 110-120 V, 50-60 Hz
Power	1600 W (for 50 Hz) 1800 W (for 60 Hz)
Spindle speed	2780-3340 rpm (at 230 V) 2740-3290 rpm (at 115 V)
Tooling	integrated milling head with 10 square TCT inserts
Bevel angle	0-60° with continuous angle adjustment
Max bevel width	21 mm (13/16)
Weight	23 kg (51 lbs)
Product Code 220-240 V, 50-60 Hz	UKS-0461-10-20-00-0
Product Code 110-120 V, 50-60 Hz	UKS-0461-10-10-00-0



Pipe beveling



Plate facing-off



Plate beveling



Continuous angle adjustment from 0 to 60 degrees.



BM-21 contains anti-vibration system including special shaped gripping construction with 4 dampers, enabling more comfortable operation, minimizing unwanted vibrations.

According to manufacturer's research the new anti-vibration system reduces vibration perceptibility by 37%.

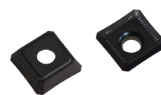
Standard universal guide plate for beveling both plates and pipes Ø 150-300mm (6-12")



Mono block milling head, with 10 indexable inserts fixed with screws.
Product code: GLW-0461-03-00-00-0



Cutting Insert (1 piece), sold 10 pcs/box
Product code: PLY-000282



Cutting Insert HD (1 piece), sold 10 pcs/box
Product code: PLY-000591



Optional guide for pipes Ø 260-600mm (10-24")
Product code: PRW-0461-22-00-00-0



All information is subject to change without notice. 21.11



PROMOTECH Sp. z o.o.
ul. Elewatorska 23/1, 15-620 BIAŁYSTOK, POLAND
tel. (+48 85) 678 34 05, fax (+48 85) 662 78 77
marketing@promotech.eu www.promotech.eu

Your local dealer:

